

<http://classwork.engr.oregonstate.edu:53795/>

Project Title: Bit and Barrel Winery Database Management System

Team Members: Gabriel Del Valle Rivera & Manuel Ramirez

Group: 40

Executive Summary:

Step 2

- Users wanted a clearer understanding of the project scope, including specific metrics like customer estimates, producer data, and financial information. These details were added to the project overview to enhance clarity.
- There were challenges with accurately representing M:N relationships between Orders and Bottles. This was resolved by implementing an intersection table (BottleOrders) to ensure proper relationship mapping.

Step 3

- Feedback from users suggested aligning schema attributes more closely with the database outline. The inconsistencies were identified and verified and the schema was updated to match the outline.
- The table BottleOrders was added to the DDL, populated with example data, and included in the project documentation.

Step 4

- Navigation challenges in the UI prompted the addition of dropdown menus for regions in the Producers table, improving data selection and filtering.
- Identified syntax inconsistencies in database queries. The DDL and DML files were updated to correct errors and improve usability.
- Adjustments were made, such as allowing nullable customer entries in Orders, to provide more flexibility.

Step 5

- Fixed discrepancies in Producers and Bottles schema relationships. Updates were made to implement non-nullable relationships and align with project requirements.

Updated Outline

- **Customers:** Tracks and stores details of customers that place orders.
 - customer_id: int, auto increment, unique, not NULL, PK
 - phone_num: varchar(10), not NULL
 - email: varchar(75)
 - name: varchar(75), not NULL
 - visit_frequency_monthly: int

Relationship: Customers has a 1:M relationship with Orders and is used through customer_id as the FK in Orders.

- **Orders:** Tracks and stores details of orders placed by customers.
 - order_id: int, auto increment, unique, not NULL, PK
 - customer_id: int, not NULL, FK
 - bottle_id: int, not NULL, FK
 - order_total: decimal(7,2)

Relationships: Orders has a 1:M relationship with Customers and a M:N relationship with Bottles.

- **Bottles:** Tracks and stores the details of each bottle of wine sold.
 - bottle_id: int, auto increment, not NULL, PK
 - bottle_name: varchar(50), not NULL
 - type: varchar(40), not NULL
 - volume: int, not NULL
 - production_yr: int, not NULL
 - alc_percent: decimal(4,2), not NULL
 - price: decimal(7,2), not NULL
 - producer_id: int, not NULL, FK

Relationship: Bottles has a M:N relationship with Orders and is used as a FK in Orders through bottle_id. Bottles also has a 1:M relationship with Producers.

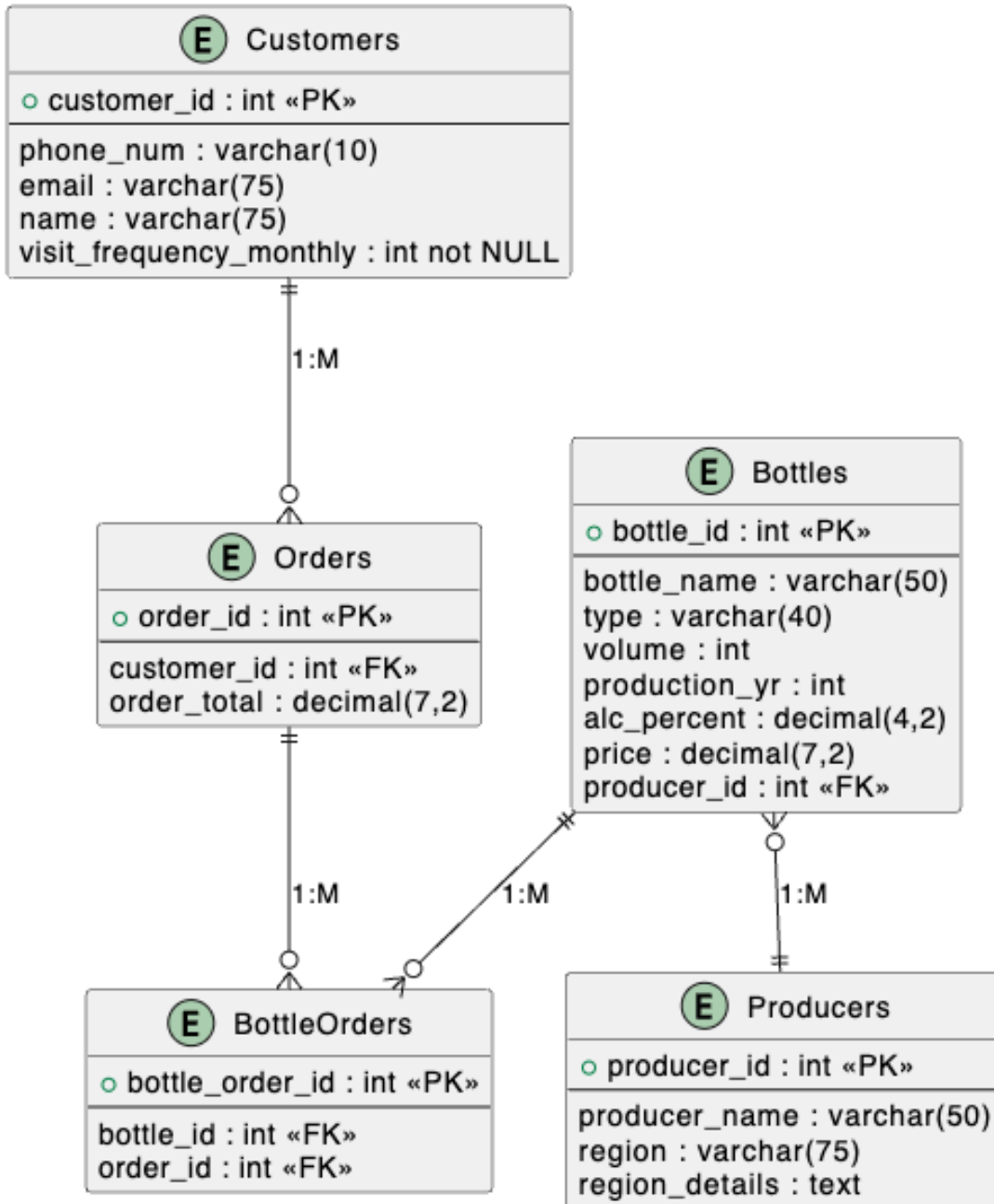
- **BottleOrders:** Tracks the different bottles attached to specific orders.
 - bottle_orderID: int, auto increment, not NULL, PK
 - order_id: int, not NULL, FK
 - bottle_id: int, NULL, FK
 - order_qty: int

Relationship: BottleOrders is the intersection table between Bottles and Orders. It has its own primary key, bottle_orderID and uses order_id and bottle_id as its foreign keys.

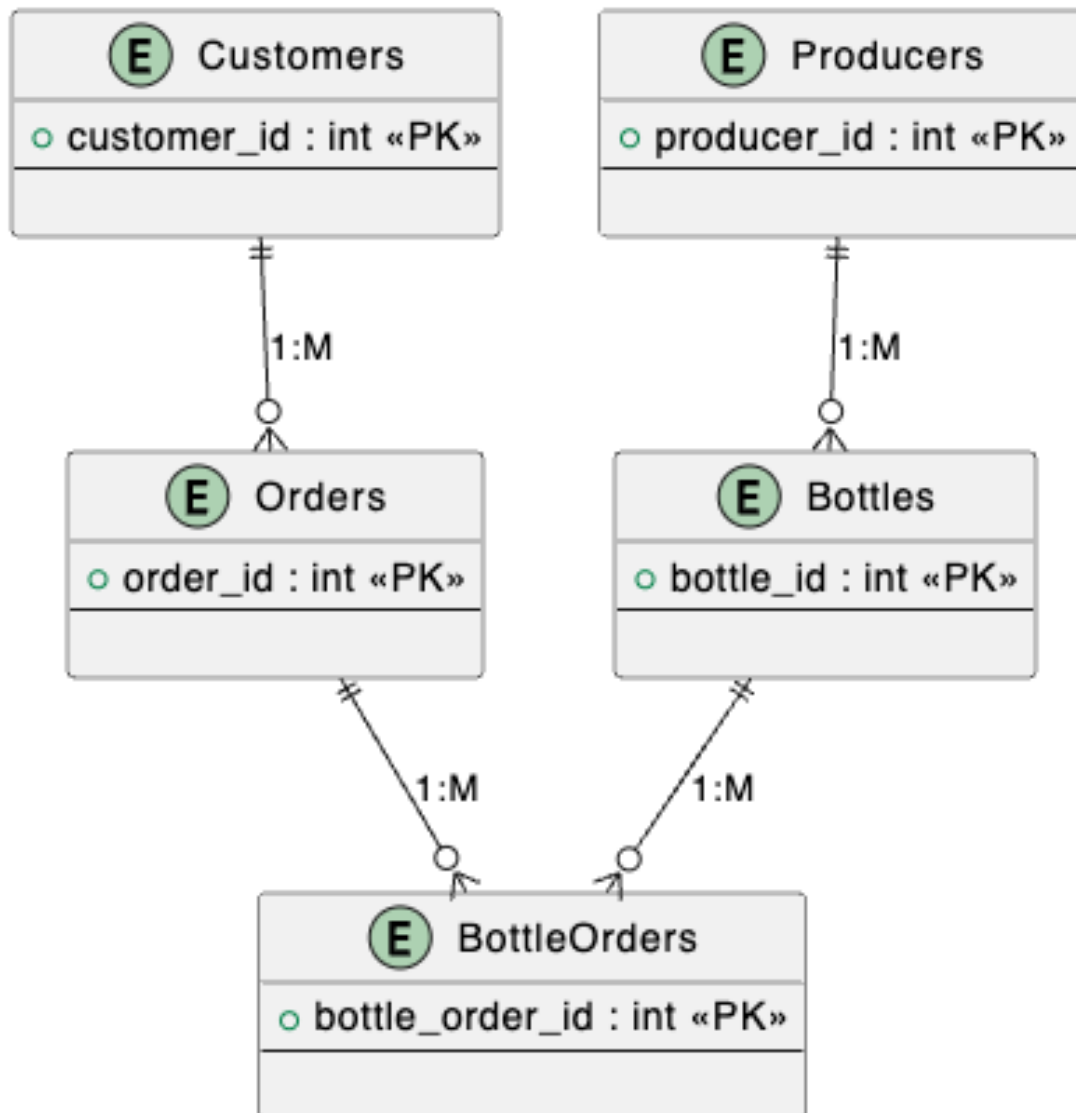
- **Producers:** Tracks and stores the details of the vineyards that produce the wines sold.
 - producer_id: int, auto increment, not NULL, PK
 - producer_name: varchar(50), not NULL
 - region: varchar(75), not NULL
 - region_details: text, not NULL

Relationship: Producers has a 1:M relationship with Bottles and is used as a FK in Bottles through producer_id.

SCHEMA



ERD



SAMPLE DATA

Customers Table

customer_id	phone_num	email	name	visit_frequency_monthly
1	7561485213	gsmith@email.com	George Smith	2
2	5413247813	asmith@gmail.com	Adam Smith	1
3	4512369756	csmith@gmail.com	Charles Smith	3

Producers Table

producer_id	producer_name	region	region_details
1	Bit Farms	Napa Valley	Producing wine since 1968
2	Byte Farms	Sonoma	Producing wine since 1985
3	Data Farms	Columbia Valley	Producing wine since 1928

Bottles Table

bottle_id	bottle_name	type	volume	production_yr	alc_percent	price	producer_id
1	Binary Blend	Merlot	750	2018	12.00	26.99	1
2	Bitwise Bordeaux	Bordeaux	750	2020	10.00	32.99	2
3	Compiler Cabernet	Cabernet	750	2015	8.00	45.99	3

Orders Table

order_id	customer_id	bottle_id	order_total
1	1	3	45.99
2	2	2	32.99
3	3	1	26.99

BottleOrders Table

bottle_orderID	order_id	bottle_id	order_qty
1	1	3	1
2	2	2	1
3	3	1	1

UI SCREENSHOTS

READ, ADD NEW, DELETE AND UPDATE BOTTLE ORDERS

Home PageCustomers PageBottles PageProducers PageOrders PageBottle Orders Page

Bottle Orders

bottle_orderID	order_id	bottle_id	order_qty	Actions
1	3	Compiler Cabernet	1	<div>EditDelete</div>
2	2	Bitwise Bordeaux	1	<div>EditDelete</div>
3	1	Binary Blend	1	<div>EditDelete</div>

Add a New Bottle Order

Order ID:

Select Order

Bottle:

Select Bottle

Quantity:

Add Bottle Order

- Delete bottle order satisfies M:N requirement
- Edit bottle order satisfies M:N requirement
- bottle_id satisfies the nullable relationship requirement

READ, ADD NEW, DELETE AND UPDATE ORDERS

Home PageCustomers PageBottles PageProducers PageOrders PageBottle Orders Page

Orders Table

order_id	customer_id	bottle_id	order_total	name	bottle_name	Actions
1	1	3	45.99	George Smith	Compiler Cabernet	<div>DeleteEdit</div>
2	2	2	32.99	Adam Smith	Bitwise Bordeaux	<div>DeleteEdit</div>
3	3	1	26.99	Charles Smith	Binary Blend	<div>DeleteEdit</div>

Add a new order:

Customer:

George Smith

Bottle:

Binary Blend

Order Total:

Add Order

READ, ADD NEW, AND UPDATE PRODUCERS

Bit & Barrel Winery Database

[Home Page](#)[Customers Page](#)[Bottles Page](#)[Producers Page](#)[Orders Page](#)[Bottle Orders Page](#)

Producers Table

producer_id	producer_name	region	region_details	Actions	
1	Bit Farms	Napa Valley	Producing wine since 1968	Delete	Edit
2	Byte Farms	Sonoma	Producing wine since 1985	Delete	Edit
3	Data Farms	Columbia Valley	Producing wine since 1928	Delete	Edit

Add a new producer:

Producer Name:

Region:

Region Details:

Add Producer

READ, ADD NEW, DELETE AND UPDATE BOTTLES

Bit & Barrel Winery Database

[Home Page](#)[Customers Page](#)[Bottles Page](#)[Producers Page](#)[Orders Page](#)[Bottle Orders Page](#)

Bottles Table

bottle_id	bottle_name	type	volume	production_yr	alc_percent	price	producer_id	producer_name	Producer Name	Actions	
1	Binary Blend	Merlot	750	2018	12.00	26.99	1	Bit Farms		Delete	Edit
2	Bitwise Bordeaux	Bordeaux	750	2020	10.00	32.99	2	Byte Farms		Delete	Edit
3	Compiler Cabernet	Cabernet	750	2015	8.00	45.99	3	Data Farms		Delete	Edit

Add a new bottle:

Bottle Name:

Wine Type:

Volume:

Year Produced:

% Alcohol:

Price:

Producer:

Select Producer

Add Bottle

READ, ADD NEW, UPDATE AND DELETE CUSTOMERS

Bit & Barrel Winery Database

Customers Table

customer_id	phone_num	email	name	visit_frequency_monthly	Actions
1	7561485213	gsmith@email.com	George Smith	2	<div>DeleteEdit</div>
2	5413247813	asmith@gmail.com	Adam Smith	1	<div>DeleteEdit</div>
3	4512369756	csmith@gmail.com	Charles Smith	3	<div>DeleteEdit</div>

Add a new customer:

Phone Number:

Email:

Name:

Visit Frequency (Monthly):

Add Customer